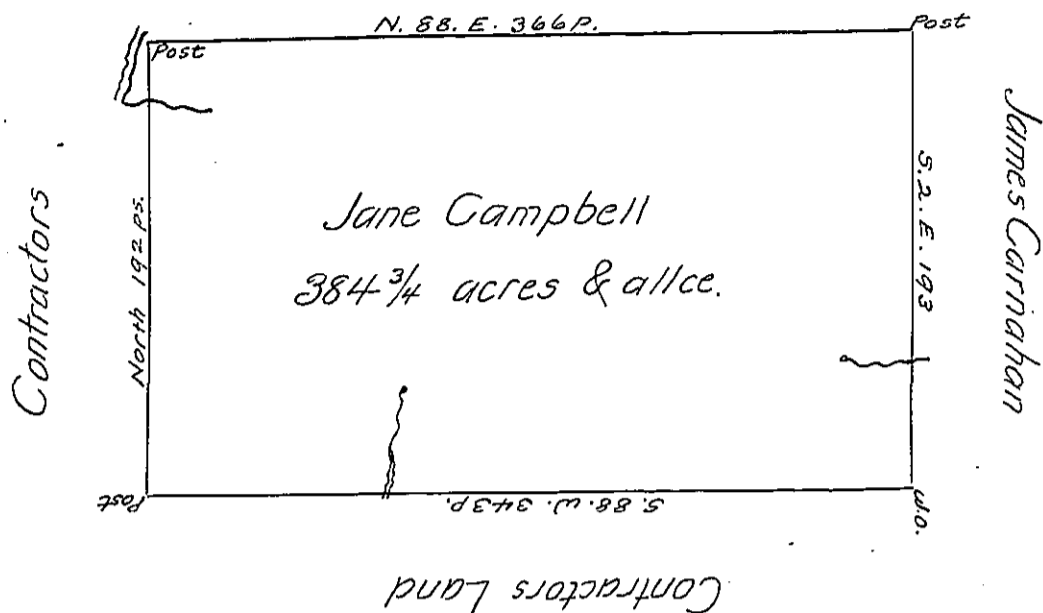


217

Patrick Campbell



In Pursuance of a Warrant bearing date February 19th. 1785

Surveyed on the Tenth day of February 1786 unto Jane Campbell the above  
Discribed Tract of Land situate in Huntington Township Westmoreland  
County Containing Three Hundred and Eighty four acres & 3/4 & allowance  
of Six p.Cent for roads &c.

Benj. Lodge D.S.

To John Lukens Esq.)  
Surveyor Genl. }

N.B. the line along Pat<sup>k</sup> Campbells land (according to that Dft.)  
should be but 343 perches and ye <sup>opposite</sup> line along the Contractors land should  
be, according to that 349.8 ps.

IN TESTIMONY that the above is a copy of the original remaining on file in  
the Department of Internal Affairs of Pennsylvania, made  
conformably to an Act of Assembly approved the 16th day of  
February, 1833, I have hereunto set my Hand and caused  
the Seal of said Department to be affixed at Harrisburg,  
this nineteenth day of April 1904.

*Joac P. Brown*  
Secretary of Internal Affairs.